

**LOOKING FOR
AN INSPIRING
PLACE TO
PROGRESS
YOUR CAREER?**



WE ARE RECRUITING

*you:*niversitynext

Our Fast Track Management
Development Programme in hospitality
for people wanting to accelerate their
career with PPHE Hotel Group

Apply at: jobs.pphe.com




PARK
PLAZA


art'otel


ARENA HOTELS &
APARTMENTS


ARENA CAMPSITES

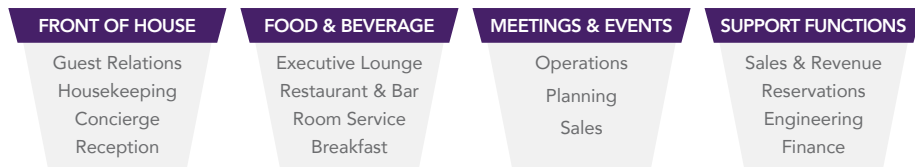
What's next for you?

you:niversity**next** is our Fast Track Management Development Programme that takes you on a structured journey through all the major divisions of our hotels and support functions.

The aim of the programme is to develop our future leadership pipeline and you will gain a deep understanding of how we operate whilst developing your management and leadership skills.

The Programme Structure

You will gain valuable experiences across multiple operational divisions and understand how we operate as a business*.



* Your individual tailored training plan will be created for your region.

What's in it for you?

- A personal senior mentor
- Associate membership of the Institute of Hospitality
- Level 4 Award in Leadership and Management accredited by the Institute of Leadership and Management (ILM)
- Attractive salary, employee rates and F&B discounts

To apply, you must meet one (or more) of the following criteria:

- College / Hotel School education and some hospitality work experience
- Hospitality or Business degree
- Have worked in a supervisory level position in hospitality

And also:

- Have right to work in the UK or The Netherlands
- Commit to a full 2 year programme

Submit your application and CV via:

jobs.pphe.com